

# SERVING FROM THE HEART ACROSS THE WORKFORCE

*A symposium on the integration of promotores and  
community health workers in different settings*

## Visión y Compromiso™



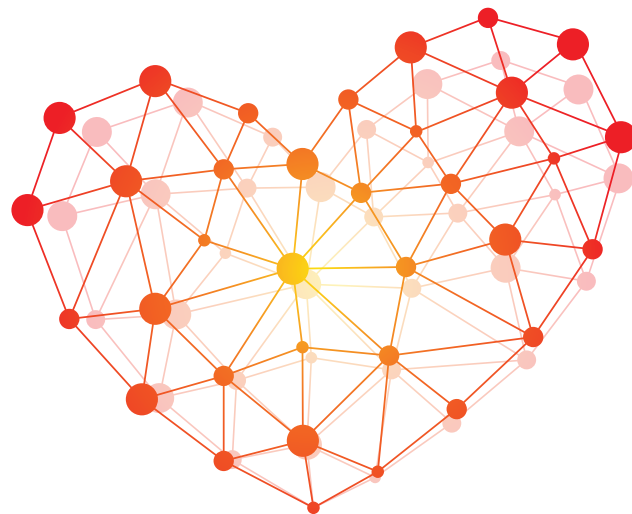
An opportunity to meet and learn  
from colleagues in the clinic, county,  
academic and non-profit sectors

**THURSDAY, OCTOBER 18, 2018**

**9:30 a.m.–1:00 p.m.**

SAN MANUEL GATEWAY COLLEGE  
FIRST FLOOR-RM 1&2  
250 SOUTH 'G' STREET  
SAN BERNARDINO, CA, 92450

Over the last several years, there has been an increase in interest from clinics, non-profits and researchers wanting to integrate promotores into their work. As a result, there are many questions, uncertainties and requests for consultations and work to determine what roles are most relevant for a promotor or community health worker. The goal of this symposium is to facilitate rich discussions to help clarify some of these questions through panel and round table dialogues.



- Setting the stage—El Corazón of the Promotor and Community Health Worker
- Emerging Trends in the Promotor and Community Health Worker Models
- Exemplary Examples: What Works, Challenges and Solutions
- Workforce Challenges and Solutions

For questions please contact Ana Velazquez at [ana@visionycompromiso.org](mailto:ana@visionycompromiso.org)

Attendance is limited, register now: <http://tinyurl.com/servingfrmthhrt>