



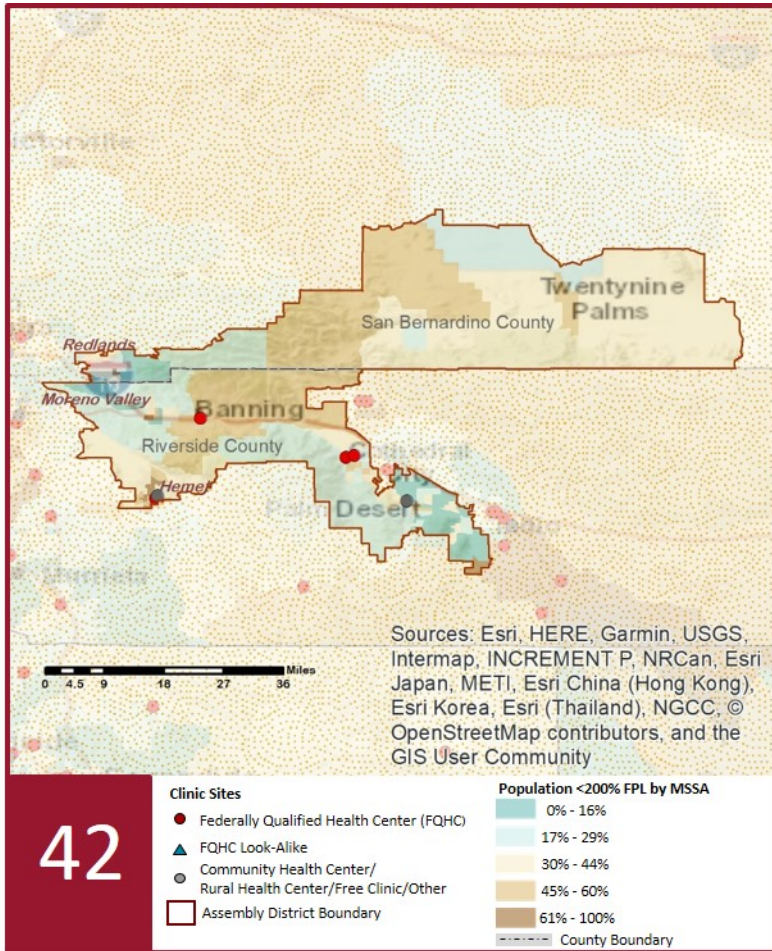
2021 Profile of Community Health Centers Assembly District 42

Assemblymember Chad Mayes



The Clinics

Community Health Centers (CHCs) are nonprofit health care practices located in low income and medically underserved areas. CHCs share a common mission to serve everyone who walks through their doors, regardless of their ability to pay. The term CHC include Federally Qualified Health Centers (FQHC), FQHC Look-Alikes, Migrant Health Centers, Rural and Frontier Health Centers, and Free Clinics. CHCs are an essential segment of the safety net. In many California Counties, they provide a significant proportion of comprehensive primary care services to those who are publicly subsidized or uninsured.



42

Clinic Types

Total Number of CHCs	7
Federally Qualified Health Center Sites (FQHC)	5
FQHC Look-Alike Sites	0
Rural Health Center Sites (95-210 RHC)	2

Demographics

Patients	27,129	
Male	10,754	40%
Female	16,375	60%
19 Years & Under	4,462	16%
Encounters	79,283	

Poverty Level

Under 100%	14,455	53%
100 - 138%	2,565	9%
139 - 200%	2,758	10%
201 - 400%	1,508	6%
Over 400%	1,148	4%
Unknown	4,695	17%

Age

Less than 1 Year	148	1%
1 - 4 Years	710	3%
5 - 12 Years	1,243	5%
13 - 14 Years	411	2%
15 - 19 Years	1,950	7%
20 - 34 Years	9,939	37%
35 - 44 Years	3,882	14%
45 - 64 Years	6,820	25%
More than 65 Years	2,026	7%

Race

White (non-Hispanic)	7,314	27%
Hispanic	11,710	43%
Black	1,676	6%
Native American	332	1%
Asian/Pacific Islander	798	3%
More than one Race	125	0%
Other/ Unknown	5,174	19%

Ethnicity

Hispanic	11,710	43%
Non-Hispanic	12,592	46%
Unknown	2,827	10%
Primary Language Not English	12%	

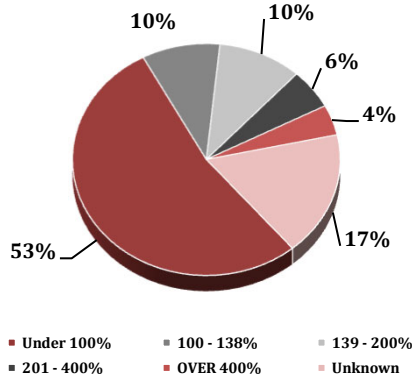
Language

2021 Profile of Community Health Centers Assembly District 42

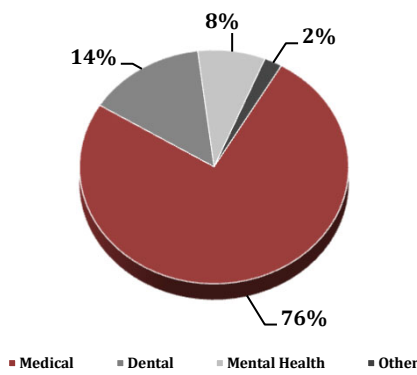
Assemblymember Chad Mayes



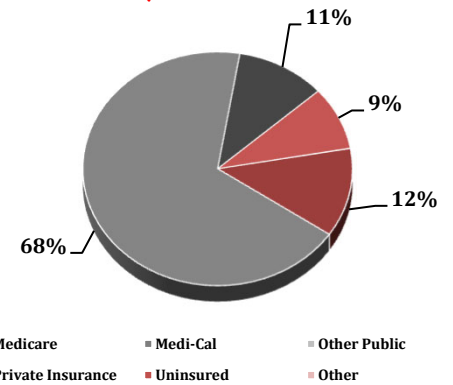
Federal Poverty Level



Services



Payment Source



Services	Provider FTEs	Encounters
Medical*	23.5 63%	59,858 75%
Dental**	5.4 15%	11,278 14%
Mental Health***	7.3 19%	6,441 8%
Other****	1.2 3%	1,706 2%

% of CHCs providing other significant services

Vision Services	0%
Basic Lab Services	86%
Radiology Services	14%
Pharmacy Services	29%
Urgent Care Services	0%
Substance Abuse Services	14%
Women's Health Services	71%

*Physicians; Physician Assistants; Family Nurse Practitioners; Certified Nurse Midwives and Visiting Nurses.
**Psychiatrists; Clinical Psychologists; Licensed Clinical Social Workers.
****Other providers billable to Medi-Cal.

Revenue and Utilization by Payment Source

Program	Patients**	Encounters
Medicare	1,698 6%	8,917 11%
Medi-Cal	14,450 53%	49,543 62%
Other Public	1 0%	1 0%
Private Insurance	2,414 9%	7,834 10%
Uninsured Services	8,499 31%	6,380 8%
Covered California	55 0%	87 0%
PACE	- 0%	- 0%
Other	12 0%	23 0%
BCCCP**	198 1%	351 0%
CHDP**	50 0%	176 0%
Family PACT**	3,422 13%	5,971 8%

Gross Patient Revenue (charged)

\$26,028,582

Net Patient Revenue (collected)

\$18,184,441

Other Operating Revenue

Federal Funds	\$ 3,467,247
State Funds	\$ 94,069
County/Local Funds	\$ 57,061
Private	\$ 354,799
Donations/Contributions	\$ 18,489
Other	\$ 3,000

TOTAL OPERATING REVENUE

\$22,179,106

**Patient counts for Episodic programs (BCCCP, CHDP, Family PACT and Other Episodic Programs) are duplicated. Episodic Programs include Breast Cancer Programs such as the Breast Cancer Early Detection Program (BCCCP) and the Breast and Cervical Cancer Control Program (BCCCP); CHDP = Child Health and Disability Prevention Program; Family PACT = Family Planning Access Care and Treatment Program and other payers covered by a grant.

Because of their philosophy and by necessity, CCHCs have been vigilant about controlling the cost of care, and the untoward effects of deferred or neglected care, by promoting a broad range of preventive health services specifically targeted to the particular needs of their communities and patient populations. The Federal Office of Management and Budget has found the Health Center Program to be one of the ten most effective federal programs and the most effective program under the federal Health and Human Services Agency. Despite enormous challenges, CCHCs have persisted in their mission to serve their local communities.

Profile created by Jeanita Harris, Sr. Data Analyst, CPCA. Data is based on 2019 OSHPD AUR.