



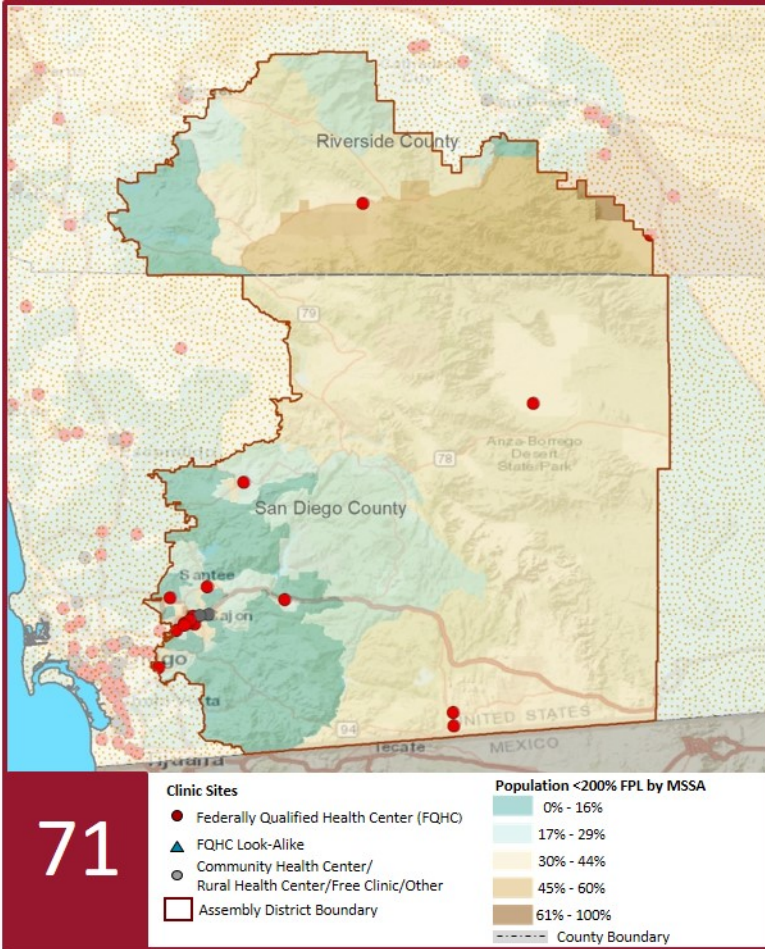
2021 Profile of Community Health Centers Assembly District 71



Assemblymember Randy Voepel

The Clinics

Community Health Centers (CHCs) are nonprofit health care practices located in low income and medically underserved areas. CHCs share a common mission to serve everyone who walks through their doors, regardless of their ability to pay. The term CHC include Federally Qualified Health Centers (FQHC), FQHC Look-Alikes, Migrant Health Centers, Rural and Frontier Health Centers, and Free Clinics. CHCs are an essential segment of the safety net. In many California Counties, they provide a significant proportion of comprehensive primary care services to those who are publicly subsidized or uninsured.



Clinic Types

Total Number of CHCs	18
Federally Qualified Health Center Sites (FQHC)	16
FQHC Look-Alike Sites	0
Rural Health Center Sites (95-210 RHC)	2

Demographics

Patients	178,908	
Male	73,301	41%
Female	105,607	59%
19 Years & Under	60,030	34%
Encounters	732,291	

Poverty Level

Under 100%	73,600	41%
100 - 138%	15,882	9%
139 - 200%	10,200	6%
201 - 400%	2,903	2%
Over 400%	2,273	1%
Unknown	74,050	41%

Age

Less than 1 Year	3,614	2%
1 - 4 Years	12,694	7%
5 - 12 Years	23,802	13%
13 - 14 Years	5,747	3%
15 - 19 Years	14,173	8%
20 - 34 Years	39,725	22%
35 - 44 Years	22,052	12%
45 - 64 Years	41,583	23%
More than 65 Years	15,518	9%

Race

White	34,327	19%
Hispanic	63,061	35%
Black	8,378	5%
Native American	1,368	1%
Asian/Pacific Islander	7,798	4%
More than one Race	3,071	2%
Other/ Unknown	60,905	34%

Ethnicity

Hispanic	63,061	35%
Non-Hispanic	73,785	41%
Unknown	42,062	24%
Primary Language Not English	41%	

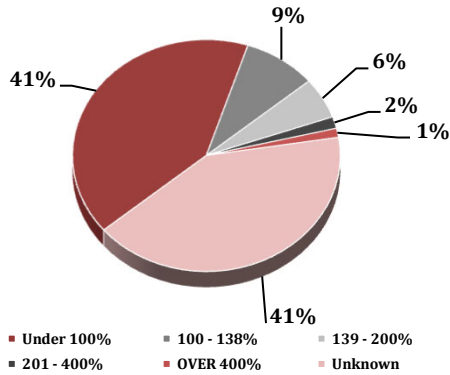
Language

2021 Profile of Community Health Centers Assembly District 71

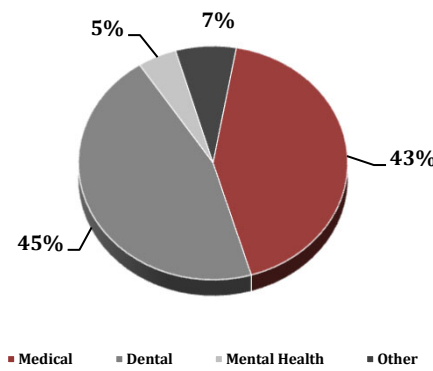
Assemblymember Randy Voepel



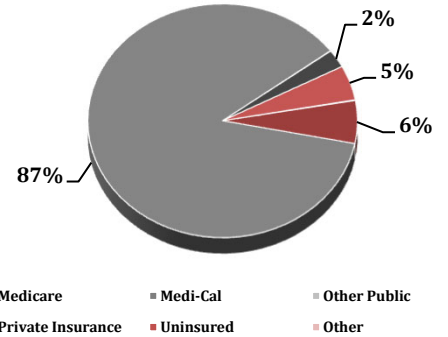
Federal Poverty Level



Services



Payment Source



Services	Provider FTEs	Encounters
Medical*	86.7 53%	312,213 43%
Dental**	18.4 11%	332,489 45%
Mental Health***	25.1 15%	34,265 5%
Other****	33.0 20%	53,324 7%

% of CHCs providing other significant services

Vision Services	39%
Basic Lab Services	89%
Radiology Services	33%
Pharmacy Services	22%
Urgent Care Services	6%
Substance Abuse Services	22%
Women's Health Services	72%

*Physicians; Physician Assistants; Family Nurse Practitioners; Certified Nurse Midwives and Visiting Nurses.
 **Psychiatrists; Clinical Psychologists; Licensed Clinical Social Workers.
 ****Other providers billable to Medi-Cal.

Revenue and Utilization by Payment Source

Program	Patients**	Encounters
Medicare	8,893 5%	41,506 6%
Medi-Cal	143,079 80%	608,434 83%
Other Public	5 0%	313 0%
Private Insurance	5,866 3%	17,588 2%
Uninsured Services	19,097 11%	33,748 5%
Covered California	1,543 1%	4,426 1%
PACE	238 0%	- 0%
Other	187 0%	634 0%
BCCCP**	1,230 1%	1,670 0%
CHDP**	389 0%	2,132 0%
Family PACT**	5,110 3%	8,325 1%

Gross Patient Revenue (charged)

\$275,825,236

Net Patient Revenue (collected)

\$180,837,799

Other Operating Revenue

Federal Funds	\$ 6,661,080
State Funds	\$ 74,245
County/Local Funds	\$ 3,911,884
Private	\$ 250,723
Donations/Contributions	\$ 160,100
Other	\$ 4,210,738

TOTAL OPERATING REVENUE

\$196,106,569

**Patient counts for Episodic programs (BCCCP, CHDP, Family PACT and Other Episodic Programs) are duplicated. Episodic Programs include Breast Cancer Programs such as the Breast Cancer Early Detection Program (BCCCP) and the Breast and Cervical Cancer Control Program (BCCCP); CHDP = Child Health and Disability Prevention Program; Family PACT = Family Planning Access Care and Treatment Program and other payers covered by a grant.

Because of their philosophy and by necessity, CCHCs have been vigilant about controlling the cost of care, and the untoward effects of deferred or neglected care, by promoting a broad range of preventive health services specifically targeted to the particular needs of their communities and patient populations. The Federal Office of Management and Budget has found the Health Center Program to be one of the ten most effective federal programs and the most effective program under the federal Health and Human Services Agency. Despite enormous challenges, CCHCs have persisted in their mission to serve their local communities.

Profile created by Jeanita Harris, Sr. Data Analyst, CPCA. Data is based on 2019 OSHPD AUR.