



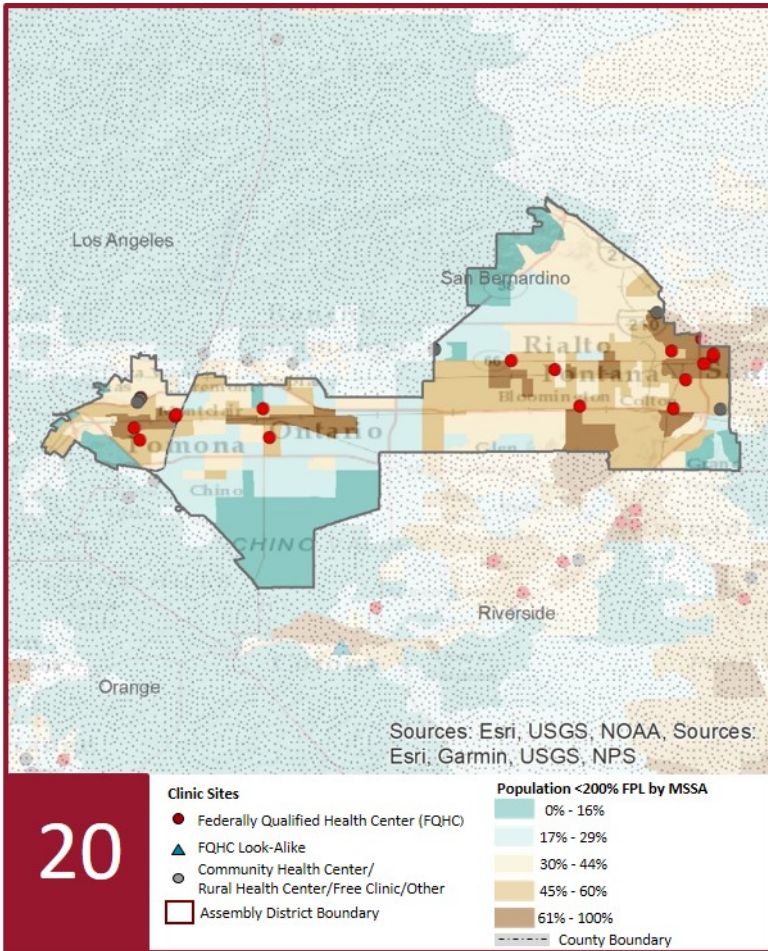
2021 Profile of Community Health Centers Senate District 20

Senator Connie Leyva



The Clinics

Community Health Centers (CHCs) are nonprofit health care practices located in low income and medically underserved areas. CHCs share a common mission to serve everyone who walks through their doors, regardless of their ability to pay. The term CHC include Federally Qualified Health Centers (FQHC), FQHC Look-Alikes, Migrant Health Centers, Rural and Frontier Health Centers, and Free Clinics. CHCs are an essential segment of the safety net. In many California Counties, they provide a significant proportion of comprehensive primary care services to those who are publicly subsidized or uninsured.



Clinic Types

Total Number of CHCs	23
Federally Qualified Health Center Sites (FQHC)	16
FQHC Look-Alike Sites	1
Rural Health Center Sites (95-210 RHC)	0

Demographics

Patients	130,398	
Male	45,833	35%
Female	84,565	65%
19 Years & Under	43,683	33%
Encounters	384,572	

Poverty Level

Under 100%	73,588	56%
100 - 138%	13,326	10%
139 - 200%	7,123	5%
201 - 400%	2,365	2%
Over 400%	1,496	1%
Unknown	32,500	25%

Age

Less than 1 Year	2,622	2%
1 - 4 Years	9,060	7%
5 - 12 Years	16,662	13%
13 - 14 Years	4,011	3%
15 - 19 Years	11,328	9%
20 - 34 Years	39,222	30%
35 - 44 Years	15,624	12%
45 - 64 Years	26,206	20%
More than 65 Years	5,663	4%

Race

White	2,671	2%
Hispanic	91,146	70%
Black	10,488	8%
Native American	1,325	1%
Asian/Pacific Islander	4,336	3%
More than one Race	4,133	3%
Other/ Unknown	16,299	12%

Ethnicity

Hispanic	91,146	70%
Non-Hispanic	33,487	26%
Unknown	5,765	4%

Language

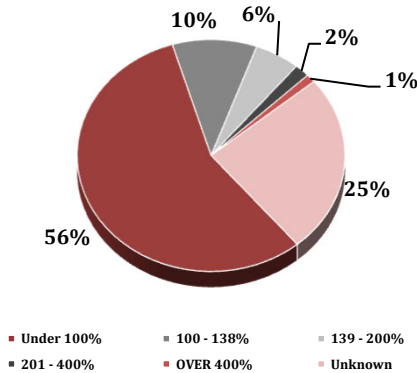
Primary Language Not English	31%
------------------------------	-----

2021 Profile of Community Health Centers Senate District 20

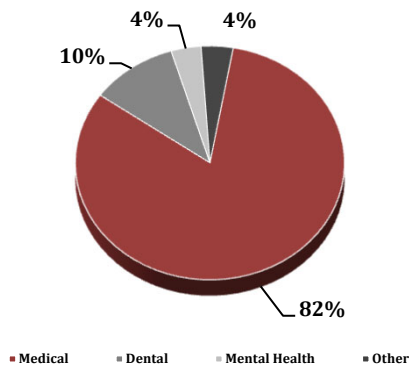
Senator Connie Leyva



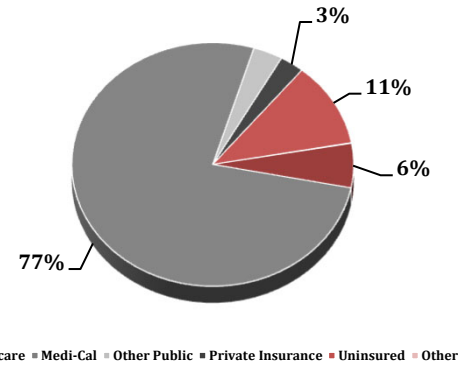
Federal Poverty Level



Services



Payment Source



Services	Provider FTEs	Encounters
Medical*	133.5 69%	315,494 82%
Dental**	22.0 11%	40,480 11%
Mental Health***	16.6 9%	13,848 4%
Other****	22.3 11%	14,750 4%

% of CHCs providing other significant services

Vision Services	26%
Basic Lab Services	74%
Radiology Services	26%
Pharmacy Services	22%
Urgent Care Services	4%
Substance Abuse Services	39%
Women's Health Services	65%

*Physicians; Physician Assistants; Family Nurse Practitioners; Certified Nurse Midwives and Visiting Nurses.
 **Psychiatrists; Clinical Psychologists; Licensed Clinical Social Workers.
 ***Other providers billable to Medi-Cal.

Revenue and Utilization by Payment Source

Program	Patients**	Encounters
Medicare	4,994 4%	20,717 5%
Medi-Cal	90,818 70%	270,399 70%
Other Public	2,275 2%	11,966 3%
Private Insurance	3,317 3%	9,827 3%
Uninsured Services	28,111 22%	39,685 10%
Covered California	764 1%	2,094 1%
PACE	- 0%	- 0%
Other	119 0%	260 0%
BCCCP**	607 0%	1,069 0%
CHDP**	4,313 3%	5,077 1%
Family PACT**	13,412 10%	23,478 6%

Gross Patient Revenue (charged)

\$159,158,588

Net Patient Revenue (collected)

\$76,574,264

Other Operating Revenue

Federal Funds	\$16,677,906
State Funds	\$ 1,151,481
County/Local Funds	\$ 2,558,669
Private	\$ 6,282,036
Donations/Contributions	\$ 206,919
Other	\$ 8,081,135

TOTAL OPERATING REVENUE

\$111,532,410

**Patient counts for Episodic programs (BCCCP, CHDP, Family PACT and Other Episodic Programs) are duplicated. Episodic Programs include Breast Cancer Programs such as the Breast Cancer Early Detection Program (BCCCP) and the Breast and Cervical Cancer Control Program (BCCCP); CHDP = Child Health and Disability Prevention Program; Family PACT = Family Planning Access Care and Treatment Program and other payers covered by a grant.

Because of their philosophy and by necessity, CCHCs have been vigilant about controlling the cost of care, and the untoward effects of deferred or neglected care, by promoting a broad range of preventive health services specifically targeted to the particular needs of their communities and patient populations. The Federal Office of Management and Budget has found the Health Center Program to be one of the ten most effective federal programs and the most effective program under the federal Health and Human Services Agency. Despite enormous challenges, CCHCs have persisted in their mission to serve their local communities.

Profile created by Jeanita Harris, Sr. Data Analyst, CPCA. Data is based on 2019 OSHPD AUR.