



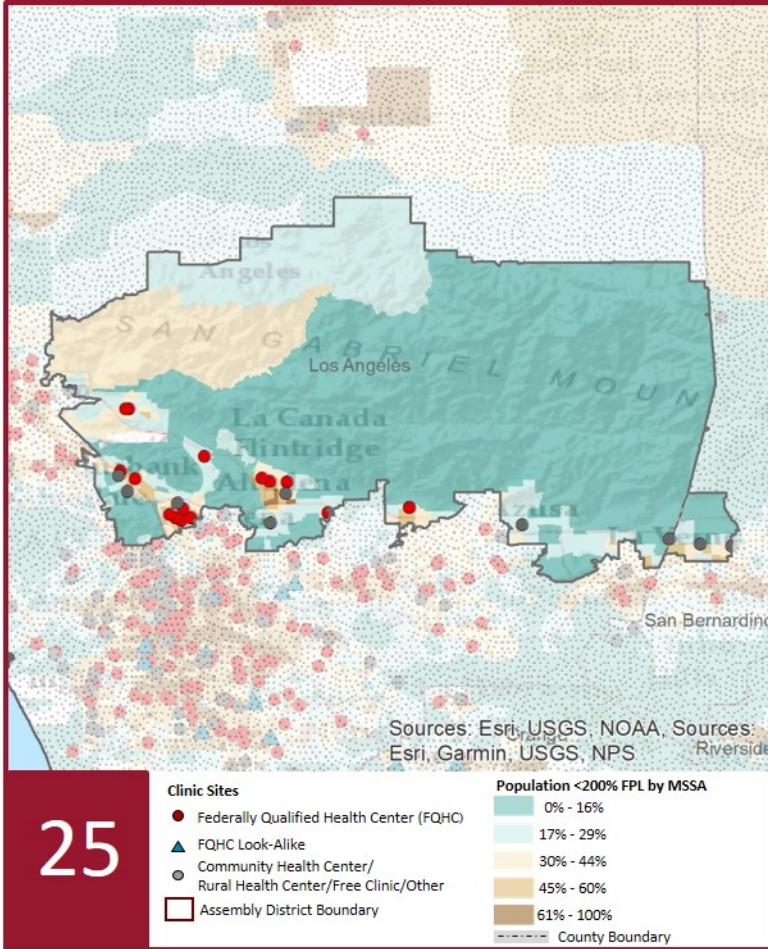
2021 Profile of Community Health Centers Senate District 25

Senator Anthony Portantino



The Clinics

Community Health Centers (CHCs) are nonprofit health care practices located in low income and medically underserved areas. CHCs share a common mission to serve everyone who walks through their doors, regardless of their ability to pay. The term CHC include Federally Qualified Health Centers (FQHC), FQHC Look-Alikes, Migrant Health Centers, Rural and Frontier Health Centers, and Free Clinics. CHCs are an essential segment of the safety net. In many California Counties, they provide a significant proportion of comprehensive primary care services to those who are publicly subsidized or uninsured.



25

Clinic Types

Total Number of CHCs	25
Federally Qualified Health Center Sites (FQHC)	17
FQHC Look-Alike Sites	0
Rural Health Center Sites (95-210 RHC)	0

Demographics

Patients	134,042	
Male	44,990	34%
Female	89,052	66%
19 Years & Under	48,605	36%
Encounters	324,016	

Poverty Level

Under 100%	75,132	56%
100 - 138%	16,664	12%
139 - 200%	11,475	9%
201 - 400%	3,425	3%
Over 400%	1,935	1%
Unknown	25,411	19%

Age

Less than 1 Year	1,909	1%
1 - 4 Years	9,195	7%
5 - 12 Years	19,704	15%
13 - 14 Years	4,368	3%
15 - 19 Years	13,429	10%
20 - 34 Years	43,748	33%
35 - 44 Years	13,893	10%
45 - 64 Years	22,185	17%
More than 65 Years	5,611	4%

Race

White	17,795	13%
Hispanic	68,708	51%
Black	8,072	6%
Native American	1,121	1%
Asian/Pacific Islander	7,127	5%
More than one Race	8,217	6%
Other/ Unknown	23,002	17%

Ethnicity

Hispanic	68,708	51%
Non-Hispanic	59,209	44%
Unknown	6,125	5%

Language

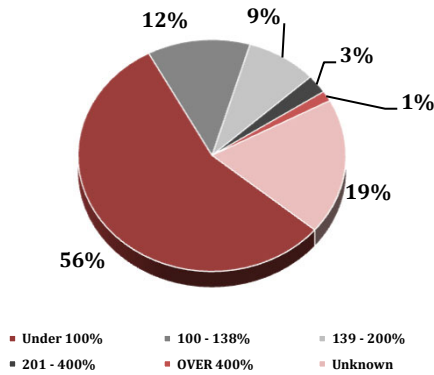
Primary Language Not English	30%
------------------------------	-----

2021 Profile of Community Health Centers Senate District 25

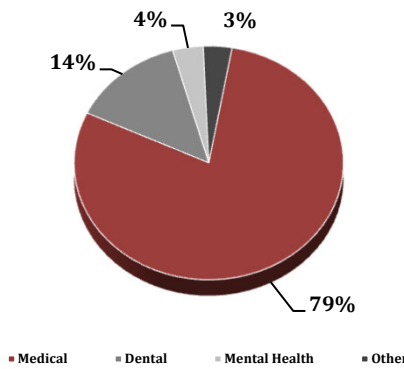
Senator Anthony Portantino



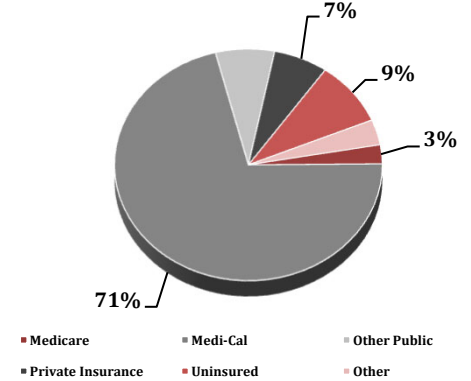
Federal Poverty Level



Services



Payment Source



Services	Provider FTEs	Encounters
Medical*	106.7 83%	256,716 79%
Dental**	10.9 8%	44,244 14%
Mental Health***	6.9 5%	11,923 4%
Other****	4.3 3%	11,133 3%

% of CHCs providing other significant services

Vision Services	16%
Basic Lab Services	52%
Radiology Services	12%
Pharmacy Services	16%
Urgent Care Services	8%
Substance Abuse Services	28%
Women's Health Services	32%

*Physicians; Physician Assistants; Family Nurse Practitioners; Certified Nurse Midwives and Visiting Nurses.
 **Psychiatrists; Clinical Psychologists; Licensed Clinical Social Workers.
 ****Other providers billable to Medi-Cal.

Revenue and Utilization by Payment Source

Program	Patients**	Encounters
Medicare	2,519 2%	7,400 2%
Medi-Cal	69,626 52%	199,353 62%
Other Public	5,208 4%	19,951 6%
Private Insurance	6,955 5%	18,402 6%
Uninsured Services	39,327 29%	25,104 8%
Covered California	505 0%	1,593 0%
PACE	- 0%	- 0%
Other	9,902 7%	9,902 3%
BCCCP**	- 0%	- 0%
CHDP**	1,016 1%	1,529 0%
Family PACT**	23,798 18%	40,782 13%

Gross Patient Revenue (charged)

\$122,329,125

Net Patient Revenue (collected)

\$59,785,351

Other Operating Revenue

Federal Funds	\$ 8,847,066
State Funds	\$ -
County/Local Funds	\$ 8,624
Private	\$ 1,978,704
Donations/Contributions	\$ 3,024,567
Other	\$ 4,972,922

TOTAL OPERATING REVENUE

\$78,617,234

**Patient counts for Episodic programs (BCCCP, CHDP, Family PACT and Other Episodic Programs) are duplicated. Episodic Programs include Breast Cancer Programs such as the Breast Cancer Early Detection Program (BCCCP) and the Breast and Cervical Cancer Control Program (BCCCP); CHDP = Child Health and Disability Prevention Program; Family PACT = Family Planning Access Care and Treatment Program and other payers covered by a grant.

Because of their philosophy and by necessity, CCHCs have been vigilant about controlling the cost of care, and the untoward effects of deferred or neglected care, by promoting a broad range of preventive health services specifically targeted to the particular needs of their communities and patient populations. The Federal Office of Management and Budget has found the Health Center Program to be one of the ten most effective federal programs and the most effective program under the federal Health and Human Services Agency. Despite enormous challenges, CCHCs have persisted in their mission to serve their local communities.

Profile created by Jeanita Harris, Sr. Data Analyst, CPCA. Data is based on 2019 OSHPD AUR.