



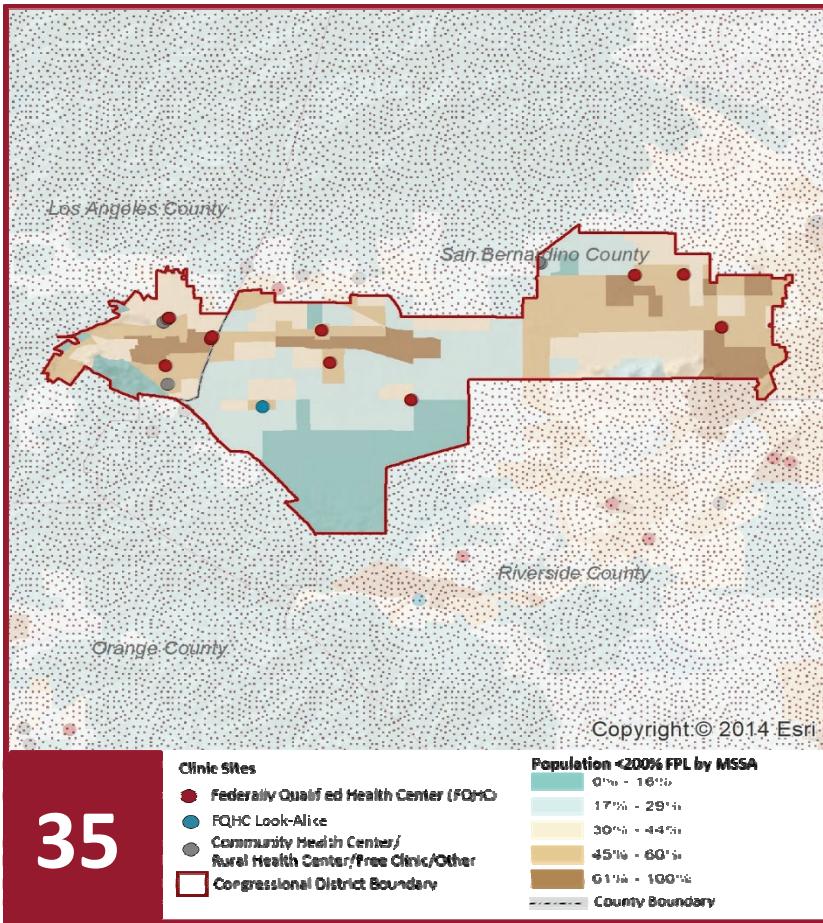
2022 Profile of Community Health Centers Congressional District 35

Representative Norma Torres



The Clinics

Community Health Centers (CHCs) are nonprofit health care practices located in low income and medically underserved areas. CHCs share a common mission to serve everyone who walks through their doors, regardless of their ability to pay. The term CHC include Federally Qualified Health Centers (FQHC), FQHC Look-Alikes, Migrant Health Centers, Rural and Frontier Health Centers, and Free Clinics. CHCs are an essential segment of the safety net. In many California Counties, they provide a significant proportion of comprehensive primary care services to those who are publicly subsidized or uninsured.



35

Clinic Types

Total Number of CHCs	17
FQHC Sites	11
FQHC Look-Alike Sites	1
Rural Health Center Sites (95-210 RHC)	0

Demographics

Patients	67,358	
Male	23,363	35%
Female	43,995	65%
19 Yrs & Under	16,298	24%
Encounters	218,665	

Poverty Level

Under 100%	34,385	51%
100 - 138%	6,602	10%
139 - 200%	3,906	6%
201 - 400%	1,574	2%
Over 400%	483	1%
Unknown	20,408	30%

Age

Under 1 Year	1,471	2%
1 - 4 Years	2,683	4%
5 - 12 Years	5,718	8%
13 - 14 Years	1,546	2%
15 - 19 Years	4,880	7%
20 - 34 Years	20,138	30%
35 - 44 Years	9,147	14%
45 - 64 Years	16,477	24%
Over 65 Years	5,298	8%

Race

White (non-hispanic)	51,752	77%
Black	3,726	6%
Native American	251	0%
Asian/Pacific Islander	2,768	4%
More than one Race	1,032	2%
Other/ Unknown	7,829	12%

Ethnicity

Hispanic	47,657	71%
Non-Hispanic	17,519	26%
Unknown	2,182	3%
AG/Migratory Workers		
Patients	461	1%
Encounters	1,545	1%

Language

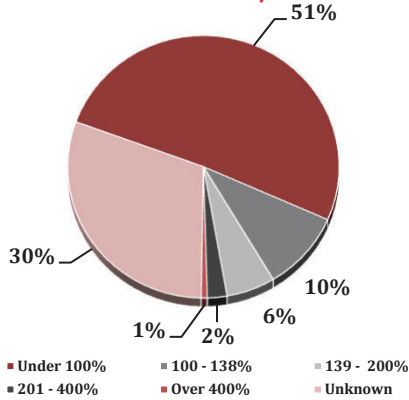
Primary Language Not English	26%
------------------------------	-----

2022 Profile of Community Health Centers Congressional District 35

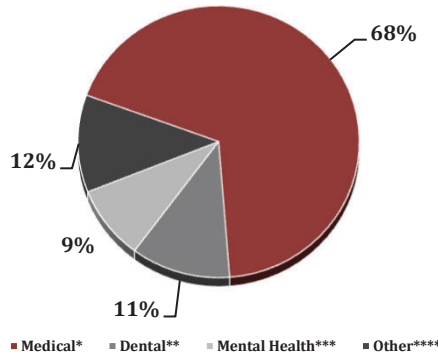
Representative Norma Torres



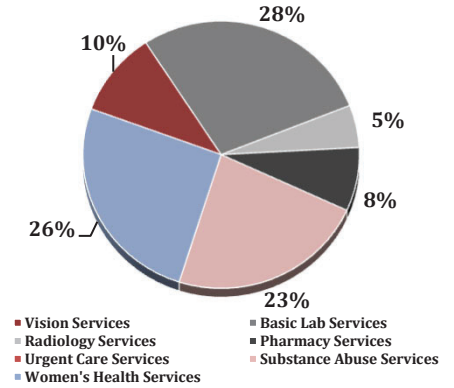
Federal Poverty Level



Services



Payment Source



Services	Provider FTEs	Encounters
Medical*	70.95 (68%)	183,323 (84%)
Dental**	11.90 (11%)	18,216 (8%)
Mental Health***	9.15 (9%)	9,082 (4%)
Other****	12.05 (12%)	8,044 (4%)

% of CHCs providing other significant services

Vision Services	24%
Basic Lab Services	65%
Radiology Services	12%
Pharmacy Services	18%
Urgent Care Services	0%
Substance Abuse Services	53%
Women's Health Services	59%

*Physicians; Physician Assistants; Family Nurse Practitioners; Certified Nurse Midwives and Visiting Nurses. ***Psychiatrists; Clinical Psychologists; Licensed Clinical Social Workers. ****Other providers billable to Medi-Cal and other CPSP providers not listed.

Revenue and Utilization by Payment Source

Program	Patients**	Encounters
Medicare	3,640 (5%)	17,537 (8%)
Medi-Cal	39,082 (58%)	124,085 (57%)
Other Public	1,749 (3%)	8,533 (4%)
Private Insurance	4,545 (7%)	13,917 (6%)
Uninsured Services	15,230 (23%)	27,460 (13%)
Covered California	955 (1%)	2,402 (1%)
PACE	- (0%)	- (0%)
Other	2,157 (3%)	11,888 (5%)
BCCCP**	333 (0%)	17,537 (8%)
CHDP**	1,610 (2%)	2,380 (1%)
Family PACT**	5,682 (8%)	9,850 (5%)

Gross Patient Revenue (charged)

\$65,402,435

Net Patient Revenue (collected)

\$29,274,583

Other Operating Revenue

Federal Funds	\$ 10,551,149
State Funds	\$ 265,503
County/Local Funds	\$ 1,752,965
Private	\$ 1,901,574
Donations/Contributions	\$ 85,552
Other	\$ 2,238,958

TOTAL OPERATING REVENUE

\$16,795,701

**Patient counts for Episodic programs (BCCCP, CHDP, Family PACT and Other Episodic Programs) are duplicated. Episodic Programs include Breast Cancer Programs such as the Breast Cancer Early Detection Program (BCCCP) and the Breast and Cervical Cancer Control Program (BCCCP); CHDP = Child Health and Disability Prevention Program; Family PACT = Family Planning Access Care and Treatment Program and other payers covered by a grant.

Because of their philosophy and by necessity, CCHCs have been vigilant about controlling the cost of care, and the untoward effects of deferred or neglected care, by promoting a broad range of preventive health services specifically targeted to the particular needs of their communities and patient populations. The Federal Office of Management and Budget has found the Health Center Program to be one of the ten most effective federal programs and the most effective program under the federal Health and Human Services Agency. Despite enormous challenges, CCHCs have persisted in their mission to serve their local communities.

Data Source is California Department of Health Care Access and Information (HCAI) 2020 Annual Utilization Report (AUR). Report prepared by the CPCA Data Team.

californiahealth⁺ advocates

ADVANCING THE MISSION OF COMMUNITY HEALTH CENTERS

(916) 503-9130
healthplusadvocates.org

1231 I Street, Suite 400, Sacramento, CA 95814