



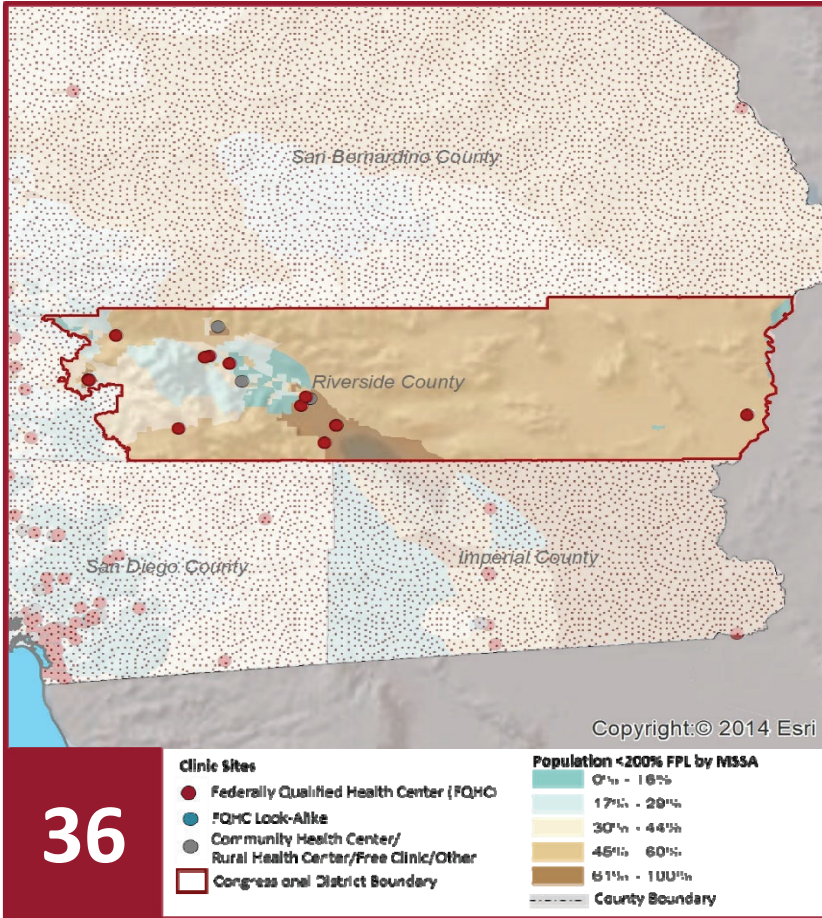
# 2022 Profile of Community Health Centers Congressional District 36

Representative Raul Ruiz, M.D.



## The Clinics

Community Health Centers (CHCs) are nonprofit health care practices located in low income and medically underserved areas. CHCs share a common mission to serve everyone who walks through their doors, regardless of their ability to pay. The term CHC include Federally Qualified Health Centers (FQHC), FQHC Look-Alikes, Migrant Health Centers, Rural and Frontier Health Centers, and Free Clinics. CHCs are an essential segment of the safety net. In many California Counties, they provide a significant proportion of comprehensive primary care services to those who are publicly subsidized or uninsured.



### Clinic Types

|  |    |
|--|----|
| Total Number of CHCs                   | 16 |
| FQHC Sites                             | 13 |
| FQHC Look-Alike Sites                  | 0  |
| Rural Health Center Sites (95-210 RHC) | 3  |

### Demographics

|                |         |     |
|----------------|---------|-----|
| Patients       | 114,302 |     |
| Male           | 45,730  | 40% |
| Female         | 68,572  | 60% |
| 19 Yrs & Under | 33,525  | 29% |
| Encounters     | 318,686 |     |

### Poverty Level

|            |        |     |
|------------|--------|-----|
| Under 100% | 32,388 | 28% |
| 100 - 138% | 6,437  | 6%  |
| 139 - 200% | 4,356  | 4%  |
| 201 - 400% | 1,994  | 2%  |
| Over 400%  | 802    | 1%  |
| Unknown    | 68,325 | 60% |

### Age

|               |        |     |
|---------------|--------|-----|
| Under 1 Year  | 2,548  | 2%  |
| 1 - 4 Years   | 6,203  | 5%  |
| 5 - 12 Years  | 13,172 | 12% |
| 13 - 14 Years | 2,888  | 3%  |
| 15 - 19 Years | 8,714  | 8%  |
| 20 - 34 Years | 29,920 | 26% |
| 35 - 44 Years | 15,462 | 14% |
| 45 - 64 Years | 26,812 | 23% |
| Over 65 Years | 8,583  | 8%  |

### Race

|                        |        |     |
|------------------------|--------|-----|
| White (non-hispanic)   | 65,979 | 58% |
| Black                  | 4,124  | 4%  |
| Native American        | 1,556  | 1%  |
| Asian/Pacific Islander | 2,966  | 3%  |
| More than one Race     | 470    | 0%  |
| Other/ Unknown         | 39,207 | 34% |

### Ethnicity

|                             |        |     |
|-----------------------------|--------|-----|
| Hispanic                    | 63,299 | 55% |
| Non-Hispanic                | 32,437 | 28% |
| Unknown                     | 18,566 | 16% |
| <b>AG/Migratory Workers</b> |        |     |
| Patients                    | 8,123  | 7%  |
| Encounters                  | 20,000 | 6%  |

### Language

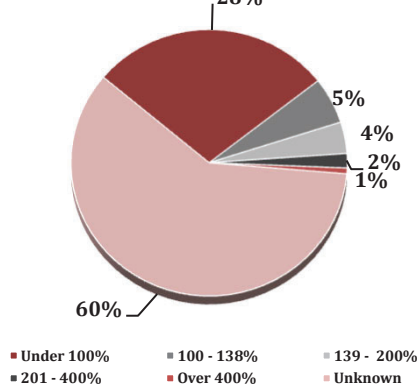
|                              |     |
|------------------------------|-----|
| Primary Language Not English | 32% |
|------------------------------|-----|

# 2022 Profile of Community Health Centers Congressional District 36

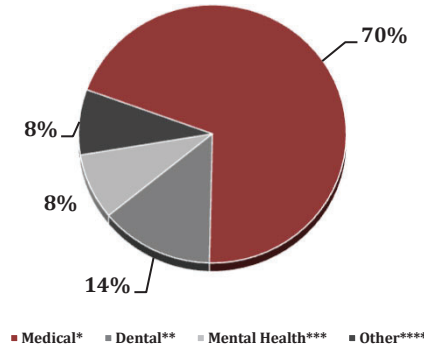
Representative Raul Ruiz, M.D.



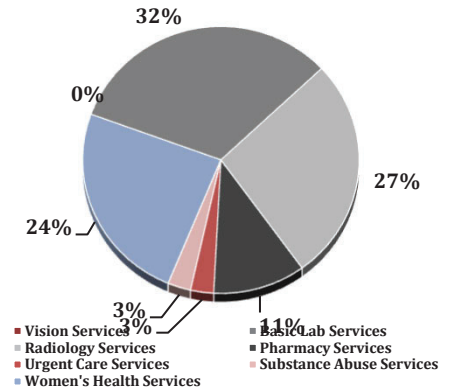
Federal Poverty Level



Services



Payment Source



| Services         | Provider FTEs | Encounters |
|------------------|---------------|------------|
| Medical*         | 73.78         | 268,779    |
| Dental**         | 14.53         | 25,212     |
| Mental Health*** | 8.74          | 13,991     |
| Other****        | 8.65          | 10,704     |

% of CHCs providing other significant services

|                          |     |
|--------------------------|-----|
| Vision Services          | 0%  |
| Basic Lab Services       | 75% |
| Radiology Services       | 63% |
| Pharmacy Services        | 25% |
| Urgent Care Services     | 6%  |
| Substance Abuse Services | 6%  |
| Women's Health Services  | 56% |

\*Physicians; Physician Assistants; Family Nurse Practitioners; Certified Nurse Midwives and Visiting Nurses. \*\*Psychiatrists; Clinical Psychologists; Licensed Clinical Social Workers. \*\*\*\*Other providers billable to Medi-Cal and other CPSP providers not listed.

## Revenue and Utilization by Payment Source

| Program            | Patients** | Encounters |
|--------------------|------------|------------|
| Medicare           | 6,653      | 25,199     |
| Medi-Cal           | 66,689     | 204,730    |
| Other Public       | 737        | 4,876      |
| Private Insurance  | 12,978     | 32,504     |
| Uninsured Services | 27,102     | 36,114     |
| Covered California | 138        | 333        |
| PACE               | -          | 0          |
| Other              | 5          | 798        |
| BCCCP**            | 1,269      | 25,199     |
| CHDP**             | 610        | 1,589      |
| Family PACT**      | 5,818      | 10,492     |

## Gross Patient Revenue (charged)

\$90,052,706

## Net Patient Revenue (collected)

\$66,407,314

## Other Operating Revenue

|                         |              |
|-------------------------|--------------|
| Federal Funds           | \$ 8,875,167 |
| State Funds             | \$ 1,113,750 |
| County/Local Funds      | \$ 1,683,172 |
| Private                 | \$ 2,415,632 |
| Donations/Contributions | \$ 1,725,663 |
| Other                   | \$ 218,923   |

## TOTAL OPERATING REVENUE

\$16,032,307

\*\*Patient counts for Episodic programs (BCCCP, CHDP, Family PACT and Other Episodic Programs) are duplicated. Episodic Programs include Breast Cancer Programs such as the Breast Cancer Early Detection Program (BCCCP) and the Breast and Cervical Cancer Control Program (BCCCP); CHDP = Child Health and Disability Prevention Program; Family PACT = Family Planning Access Care and Treatment Program and other payers covered by a grant.

Because of their philosophy and by necessity, CCHCs have been vigilant about controlling the cost of care, and the untoward effects of deferred or neglected care, by promoting a broad range of preventive health services specifically targeted to the particular needs of their communities and patient populations. The Federal Office of Management and Budget has found the Health Center Program to be one of the ten most effective federal programs and the most effective program under the federal Health and Human Services Agency. Despite enormous challenges, CCHCs have persisted in their mission to serve their local communities.

Data Source is California Department of Health Care Access and Information (HCAI) 2020 Annual Utilization Report (AUR). Report prepared by the CPCA Data Team.