



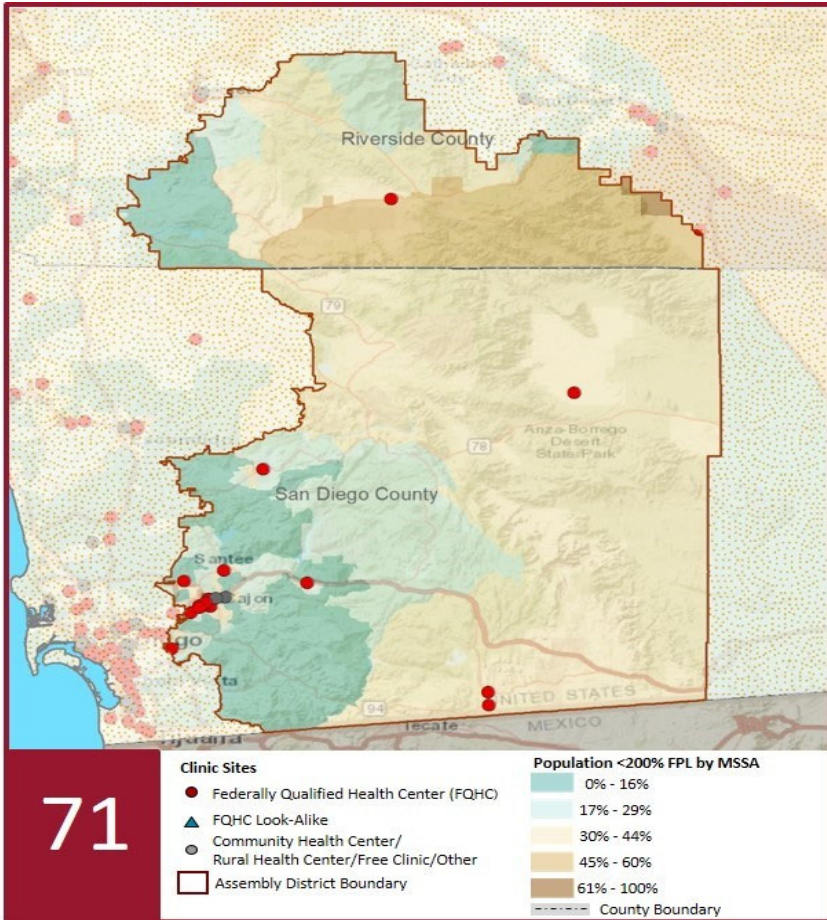
# 2022 Profile of Community Health Centers Assembly District 71

Assemblymember Randy Voepel



## The Clinics

Community Health Centers (CHCs) are nonprofit health care practices located in low income and medically underserved areas. CHCs share a common mission to serve everyone who walks through their doors, regardless of their ability to pay. The term CHC include Federally Qualified Health Centers (FQHC), FQHC Look-Alikes, Migrant Health Centers, Rural and Frontier Health Centers, and Free Clinics. CHCs are an essential segment of the safety net. In many California Counties, they provide a significant proportion of comprehensive primary care services to those who are publicly subsidized or uninsured.



71

### Clinic Types

Total Number of CHCs	19
Federally Qualified Health Center Sites (FQHC)	16
FQHC Look-Alike Sites	1
Other (Free/Tribal/Non-FQs)	2
Rural Health Center Sites (95-210 RHC)	2

### Demographics

Patients	107,922
Male	42,798 40%
Female	65,124 60%
19 Years & Under	28,001 26%
Encounters	361,081

### Poverty Level

Under 100%	64,717 60%
100 - 138%	9,287 9%
139 - 200%	6,077 6%
201 - 400%	2,324 2%
Over 400%	616 1%
Unknown	24,901 23%

### Age

Less than 1 Year	2,530 2%
1 - 4 Years	6,374 6%
5 - 12 Years	9,912 9%
13 - 14 Years	2,369 2%
15 - 19 Years	6,816 6%
20 - 34 Years	27,974 26%
35 - 44 Years	14,238 13%
45 - 64 Years	27,861 26%
More than 65 Years	9,848 9%

### Race

White	68,864	64%
Black	6,981	6%
Native American	746	1%
Asian/Pacific Islander	5,433	5%
More than one Race	2,117	2%
Other/ Unknown	23,781	22%

### Ethnicity

Hispanic	40,349	37%
Non-Hispanic	55,490	51%
Unknown	12,083	11%

### Language

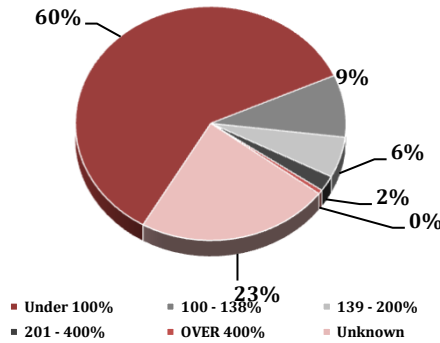
Primary Language Not English	26%
------------------------------	-----

# 2022 Profile of Community Health Centers Assembly District 71

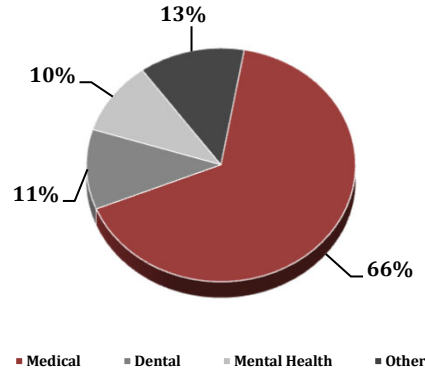
Assemblymember Randy Voepel



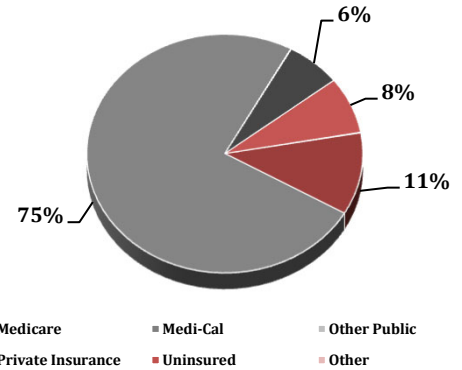
Federal Poverty Level



Services



Payment Source



Services	Provider FTEs	Encounters
Medical*	73.7 50%	238,506 66%
Dental**	16.4 11%	39,935 11%
Mental Health***	27.8 19%	36,696 10%
Other****	30.6 21%	45,944 13%

% of CHCs providing other significant services

Vision Services	26%
Basic Lab Services	79%
Radiology Services	26%
Pharmacy Services	11%
Urgent Care Services	5%
Substance Abuse Services	26%
Women's Health Services	42%

\*Physicians; Physician Assistants; Family Nurse Practitioners; Certified Nurse Midwives and Visiting Nurses.  
 \*\*\*Psychiatrists; Clinical Psychologists; Licensed Clinical Social Workers.  
 \*\*\*\*Other providers billable to Medi-Cal.

Revenue and Utilization by Payment Source

Program	Patients**	Encounters
Medicare	8,752 8%	36,778 10%
Medi-Cal	71,097 66%	246,634 68%
Other Public	24 0%	196 0%
Private Insurance	9,668 9%	21,467 6%
Uninsured Services	16,476 15%	25,317 7%
Covered California	1,527 1%	4,675 1%
PACE	244 0%	17,876 5%
Other	134 0%	266 0%
BCCCP**	757 1%	961 0%
CHDP**	268 0%	491 0%
Family PACT**	3,895 4%	6,420 2%

Gross Patient Revenue (charged)

\$116,331,769

Net Patient Revenue (collected)

\$95,706,569

Other Operating Revenue

Federal Funds	\$ 8,779,782
State Funds	\$ 122,832
County/Local Funds	\$ 2,445,441
Private	\$ 1,640,521
Donations/Contributions	\$ 104,163
Other	\$ 4,488,221

TOTAL OPERATING REVENUE

\$113,287,529

\*\*Patient counts for Episodic programs (BCCCP, CHDP, Family PACT and Other Episodic Programs) are duplicated. Episodic Programs include Breast Cancer Programs such as the Breast Cancer Early Detection Program (BCCCP) and the Breast and Cervical Cancer Control Program (BCCCP); CHDP = Child Health and Disability Prevention Program; Family PACT = Family Planning Access Care and Treatment Program and other payers covered by a grant.

Because of their philosophy and by necessity, CCHCs have been vigilant about controlling the cost of care, and the untoward effects of deferred or neglected care, by promoting a broad range of preventive health services specifically targeted to the particular needs of their communities and patient populations. The Federal Office of Management and Budget has found the Health Center Program to be one of the ten most effective federal programs and the most effective program under the federal Health and Human Services Agency. Despite enormous challenges, CCHCs have persisted in their mission to serve their local communities.

Profile created by CPCA Data Team. Data Source is 2020 HCAl Annual Utilization Report of Community Health Centers.