



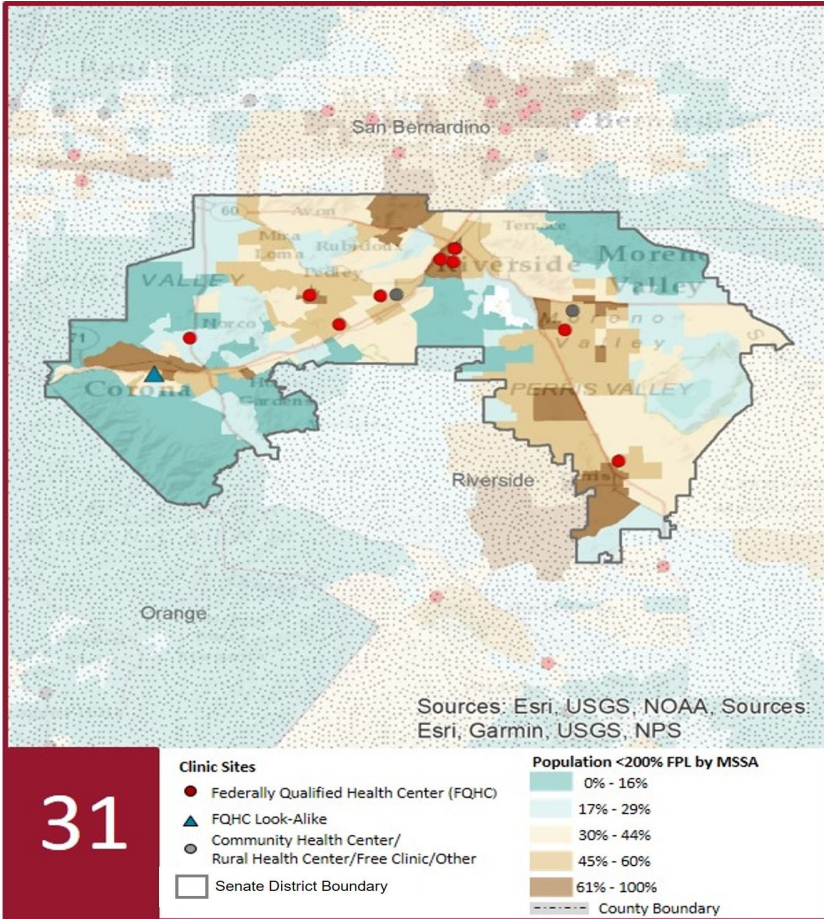
# 2022 Profile of Community Health Centers Senate District 31

Senator Richard D. Roth



## The Clinics

Community Health Centers (CHCs) are nonprofit health care practices located in low income and medically underserved areas. CHCs share a common mission to serve everyone who walks through their doors, regardless of their ability to pay. The term CHC include Federally Qualified Health Centers (FQHC), FQHC Look-Alikes, Migrant Health Centers, Rural and Frontier Health Centers, and Free Clinics. CHCs are an essential segment of the safety net. In many California Counties, they provide a significant proportion of comprehensive primary care services to those who are publicly subsidized or uninsured.



31

### Clinic Types

Total Number of CHCs	11
Federally Qualified Health Center Sites (FQHC)	8
FQHC Look-Alike Sites	1
Other (Free/Tribal/Non-FQs)	2
Rural Health Center Sites (95-210 RHC)	0

### Demographics

Patients	85,021	
Male	24,875	29%
Female	60,146	71%
19 Years & Under	19,139	23%
Encounters	231,208	

### Poverty Level

Under 100%	35,383	42%
100 - 138%	6,987	8%
139 - 200%	5,794	7%
201 - 400%	2,411	3%
Over 400%	545	1%
Unknown	33,901	40%

### Age

Less than 1 Year	888	1%
1 - 4 Years	2,583	3%
5 - 12 Years	6,404	8%
13 - 14 Years	1,673	2%
15 - 19 Years	7,591	9%
20 - 34 Years	37,771	44%
35 - 44 Years	11,014	13%
45 - 64 Years	13,591	16%
More than 65 Years	3,506	4%

### Race

White	44,112	52%
Black	7,589	9%
Native American	699	1%
Asian/Pacific Islander	3,308	4%
More than one Race	944	1%
Other/ Unknown	28,369	33%

### Ethnicity

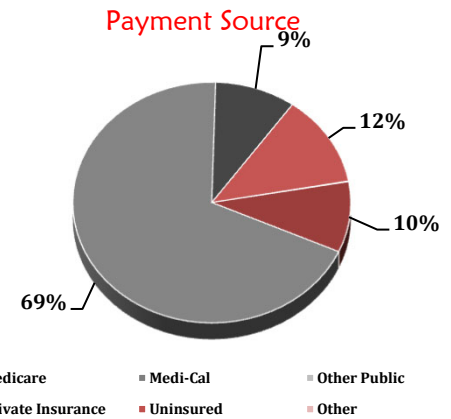
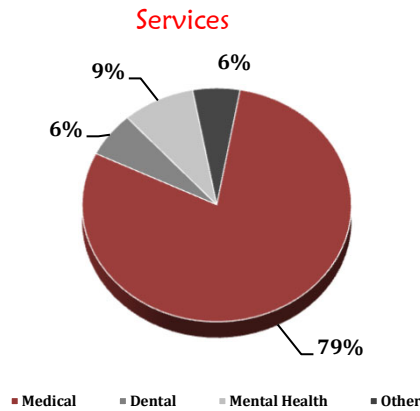
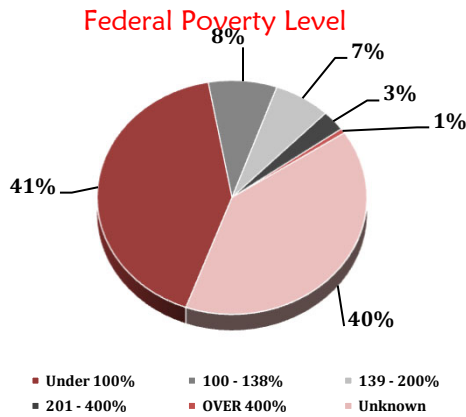
Hispanic	51,660	61%
Non-Hispanic	24,183	28%
Unknown	9,178	11%

### Language

Primary Language Not English	16%
------------------------------	-----

# 2022 Profile of Community Health Centers Senate District 31

Senator Richard D. Roth



Services	Provider FTEs	Encounters
Medical*	54.1 72%	183,695 79%
Dental**	5.5 7%	14,266 6%
Mental Health***	8.1 11%	20,149 9%
Other****	7.1 9%	13,098 6%

### % of CHCs providing other significant services

Vision Services	18%
Basic Lab Services	82%
Radiology Services	18%
Pharmacy Services	27%
Urgent Care Services	0%
Substance Abuse Services	36%
Women's Health Services	55%

\*Physicians; Physician Assistants; Family Nurse Practitioners; Certified Nurse Midwives and Visiting Nurses.  
 \*\*\*Psychiatrists; Clinical Psychologists; Licensed Clinical Social Workers.  
 \*\*\*\*Other providers billable to Medi-Cal.

### Revenue and Utilization by Payment Source

Program	Patients**	Encounters
Medicare	3,146 4%	19,854 9%
Medi-Cal	49,313 58%	143,979 62%
Other Public	2 0%	2 0%
Private Insurance	8,365 10%	19,691 9%
Uninsured Services	23,854 28%	25,744 11%
Covered California	328 0%	580 0%
PACE	- 0%	- 0%
Other	13 0%	172 0%
BCCCP**	662 1%	948 0%
CHDP**	172 0%	480 0%
Family PACT**	12,055 14%	19,758 9%

### Gross Patient Revenue (charged)

\$64,091,730

### Net Patient Revenue (collected)

\$44,730,610

### Other Operating Revenue

Federal Funds	\$ 4,160,423
State Funds	\$ 157,121
County/Local Funds	\$ 485,068
Private	\$ 1,444,245
Donations/Contributions	\$ 88,334
Other	\$ 578,078

### TOTAL OPERATING REVENUE

\$51,643,879

\*\*Patient counts for Episodic programs (BCCCP, CHDP, Family PACT and Other Episodic Programs) are duplicated. Episodic Programs include Breast Cancer Programs such as the Breast Cancer Early Detection Program (BCCCP) and the Breast and Cervical Cancer Control Program (BCCCP); CHDP = Child Health and Disability Prevention Program; Family PACT = Family Planning Access Care and Treatment Program and other payers covered by a grant.

Because of their philosophy and by necessity, CCHCs have been vigilant about controlling the cost of care, and the untoward effects of deferred or neglected care, by promoting a broad range of preventive health services specifically targeted to the particular needs of their communities and patient populations. The Federal Office of Management and Budget has found the Health Center Program to be one of the ten most effective federal programs and the most effective program under the federal Health and Human Services Agency. Despite enormous challenges, CCHCs have persisted in their mission to serve their local communities.

Profile created by CPCA Data Team. Data Source is 2020 HCAI Annual Utilization Report of Community Health Centers.