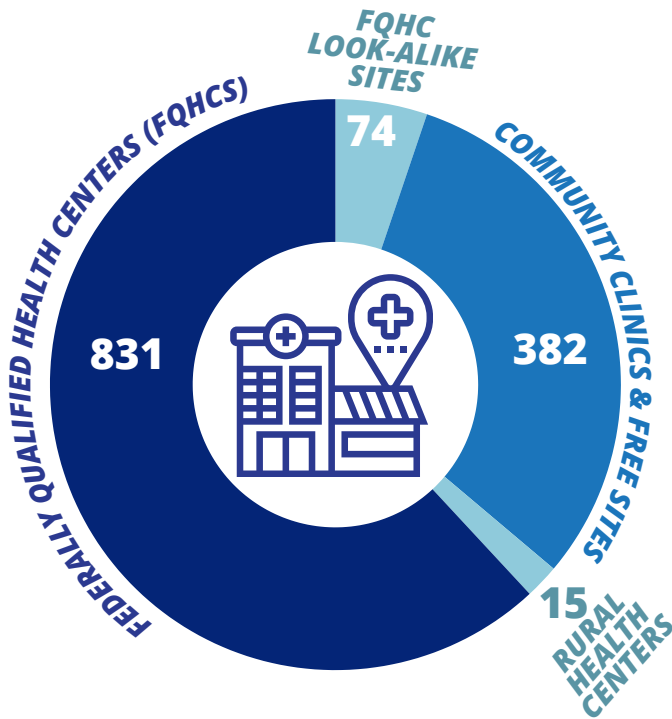


# CALIFORNIA STATE PROFILE OF COMMUNITY CLINICS AND HEALTH CENTERS

## Community Health Centers (CHCs)

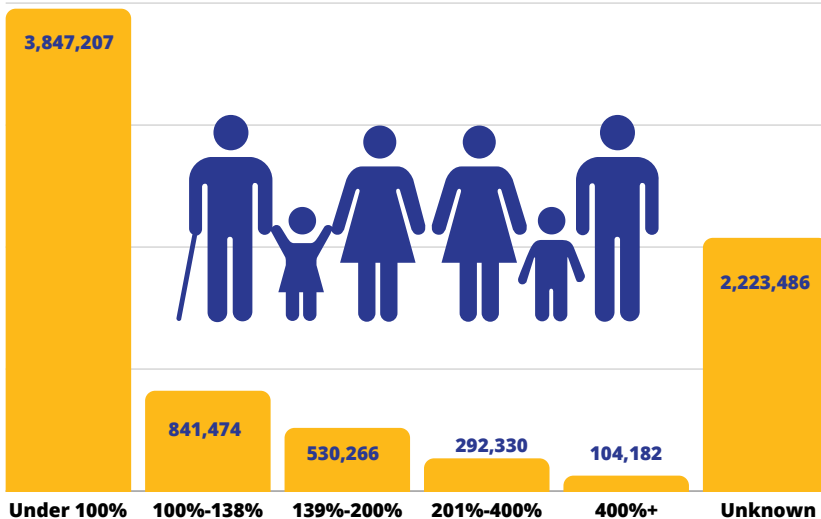
1,302 Total Sites<sup>(1)</sup>



100%<sup>(2)</sup>  
of FQHC and LAL  
offer telehealth

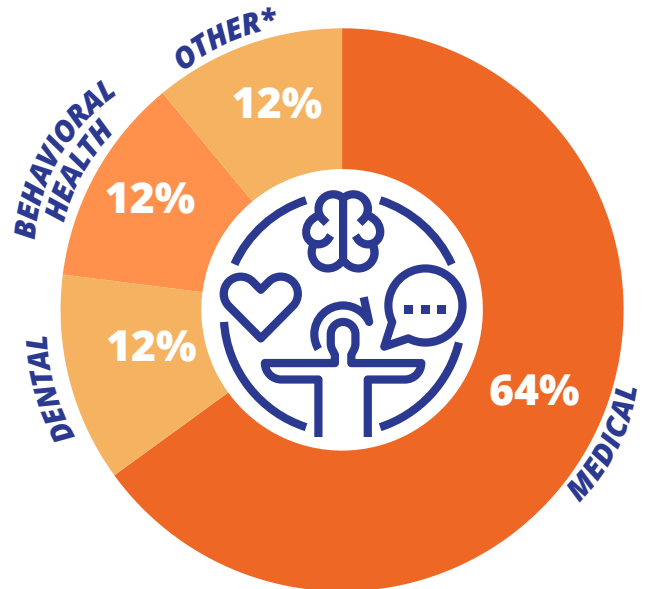
## By Income Levels

% of Federal Poverty Level<sup>(1)</sup>



## Clinical Services

24.5+ Million Encounters<sup>(1)</sup>



### Top Telemedicine Services Provided<sup>(2)</sup>

- Primary Care
- Mental Health
- Chronic Conditions
- Substance Use

### Top Community Services

- Outreach
- Education
- Transportation
- Eligibility Assistance

Data Source is California Department of Health Care Access and Information (HCAI) Annual Utilization Report (AUR) 2022<sup>(1)</sup> & Uniform Data Systems (UDS)<sup>(2)</sup>. Report prepared by the CPCA Data Team. 1231 I Street, Suite 400 • Sacramento, CA 95814 • Office: (916) 440-8170 • Fax: (916) 440-8172 • www.cpcpa.org

\*Other: Other Providers Billable to Medi-Cal - Included here are Chiropractors, Physical Therapists, Optometrists and any other professionals who are able to be reimbursed through the Medi-Cal program.

# CALIFORNIA STATE PROFILE OF COMMUNITY CLINICS AND HEALTH CENTERS

## Patient Population



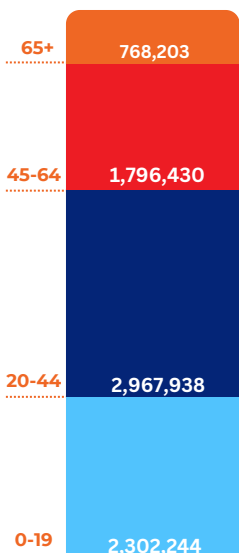
**1 out of 5 Californians**  
are served by  
community health centers

ENCOUNTERS  
**25**<sup>(1)</sup>  
MILLION

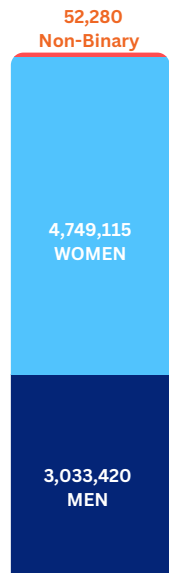
PATIENTS  
**7.8**<sup>(1)</sup>  
MILLION



**BY AGE**<sup>(1)</sup>



**BY GENDER**<sup>(1)</sup>



## Special Populations



**338+K**

**PERSONS  
EXPERIENCING  
HOMELESSNESS**<sup>(2)</sup>



**115+K**

**SCHOOL BASED  
CARE PATIENTS**<sup>(2)</sup>



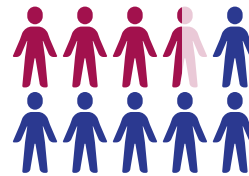
**33.6K**

**VETERANS**<sup>(2)</sup>



**832+K**

**AGRICULTURAL  
(AG)/MIGRANT  
WORKERS**<sup>(1)</sup>



**34%**

**LIMITED ENGLISH  
PROFICIENCY**<sup>(1)</sup>

## RACE | ETHNICITY<sup>(1)</sup>

